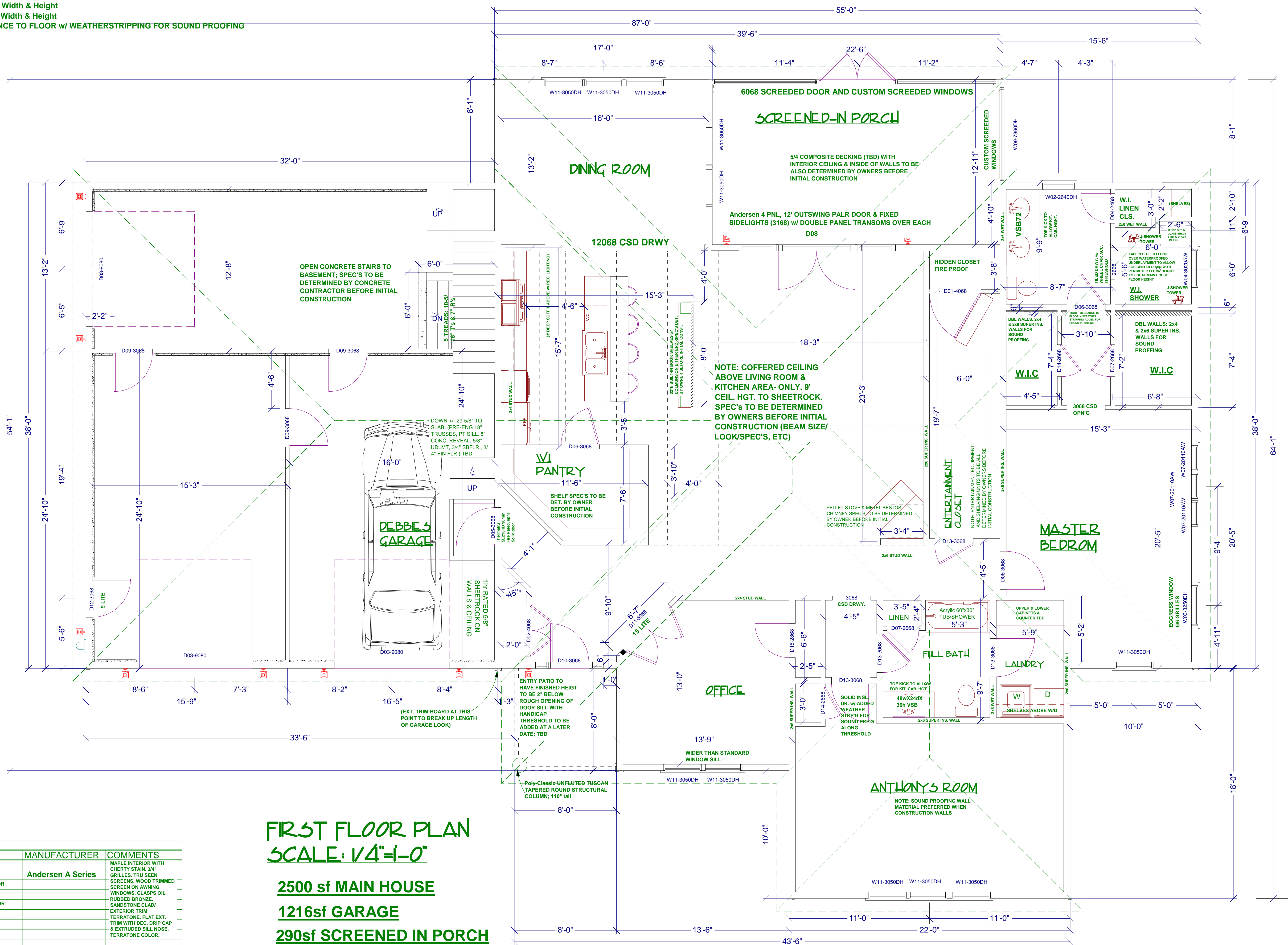


NUMBER	QTY	SIZE	DESCRIPTION	LOCK	EXT. LOCK	MANUFACTURER	COMMENTS
D01	1	4068 L IN	6 PANEL	LOCK: NONE	LOCK: NONE	Simpson or Lemieux	SLAB DOOR w/ SHELVES BUILT ONTO IT FOR HIDDEN CLOSET ACCESS
D02	1	4068 L/R IN	6 PANEL	LOCK: NONE	LOCK: NONE		
D03	3	9080	GARAGE DOORS			Holmes	Gold Series w/ Elegant Raised Panels (m 7200) w/ Colonial 509 windows. Hardware & lift-kit TBD.
D04	1	2468 R IN	6 PANEL	LOCK: NONE	LOCK: NONE		
D05	1	3068 L IN	6 PANEL, 90 minute fire rated	LOCK: STANDARD	LOCK: NONE	Thermatru	
D06	3	3068 R IN	6 PANEL	LOCK: NONE	LOCK: NONE		
D07	2	2668 R IN	6 PANEL	LOCK: NONE	LOCK: NONE		
D08	1	12068 L4 EX	12' OUTSWING PALR DOOR w/ DOUBLE PANEL TRANSOMS OVER EACH	LOCK: DEAD BOLT (INTERIOR)	LOCK: DEAD BOLT (INTERIOR)		Andersen 4 PNL, 12' OUTSWING PALR DOOR & FIXED SIDELIGHTS (3168) w/ DOUBLE PANEL TRANSOMS OVER EACH
D09	3	3068 EX.	6 PANEL	LOCK: NONE	LOCK: NONE		
D10	1	3068 L EX	Fiberclassic Mahogany FIM608 Pre-F with FIM6055L sidelights to match	LOCK: DEAD BOLT (INTERIOR)	LOCK: DEAD BOLT (EXTERIOR)		ALL LEVER'S TO BE OIL RUBBED BRONZE FINISH. Exterior doors to be Thermatru to have Ana Lever Handle & straight back plate & hinges to match. Interior doors to be solid High grade, CLEAR pine with cherry stain and Etniek brand levers & regular rosette back plates (Luzern Lever) Oil Rubbed Bronze with Hinges to match. Casing to be Windsor for doors and windows. Crown & base mouldings TBD.
D11	1	5068 L/R IN	DOUBLE, 15 LITE INTERIOR DOORS	LOCK: NONE	LOCK: NONE		
D12	1	3068 L EX	9 LITE	LOCK: DEAD BOLT (INTERIOR)	LOCK: DEAD BOLT (EXTERIOR)		
D13	4	3068 L IN	6 PANEL	LOCK: NONE	LOCK: NONE	Andersen	
D14	2	2668 L IN	6 PANEL	LOCK: NONE	LOCK: NONE		
D15	1	2868 R IN	6 PANEL	LOCK: NONE	LOCK: NONE	Thermatru	WITH DENTAL SHELF ADDED TO EXTERIOR IF NO storm door will be used
D16	1	6068 L/R EX	SCREENED PORCH DOUBLE HINGED DOORS	LOCK: DEAD BOLT (INTERIOR)	LOCK: DEAD BOLT (EXTERIOR)	unknow	SCREENED PORCH DOUBLE HINGED DOORS

**NOTE:** ROUGH OPENINGS FOR EXTERIOR DOORS: ADD 2-1/2" TO Width & Height  
ROUGH OPENINGS FOR INTERIOR DOORS: ADD 2-1/2" TO Width & Height  
THEATER RM & MSTR BATH DOORS TO BE TIGHT-TOLERANCE TO FLOOR w/ WEATHERSTRIPPING FOR SOUND PROOFING



**FIRST FLOOR PLAN**  
**SCALE: 1/4"=1'-0"**  
**2500 sf MAIN HOUSE**  
**1216sf GARAGE**  
**290sf SCREENED IN PORCH**

NUMBER	QTY	DIMENSIONS	R/O	DESCRIPTION	MANUFACTURER	COMMENTS
W01						
W02	1	30"X48"DH	30X48	DOUBLE HUNG	Andersen A Series	MAPLE INTERIOR WITH CHERRY STAIN, 3/4" GRILLES, TRU SEEN SCREENS, WOOD TRIMMED SCREEN OR AWNING
W03	2	36"X12"FX	36X12	FWTD-1-3110 TRANS. OVER DOOR		
W04	1	36"X24"AW	36X24	AWNING		WINDOWS, CLASPS OIL RUBBED BRONZE, SANDSTONE CLAD
W05	1	72"X12"FX	72X12	FWTD-1-6010 TRANS. OVER DOOR		
W06	1	38"X60"DH	38X60	DOUBLE HUNG		EXTERIOR TRIM TERRATONE FLAT EXT. TRIM WITH DEC. DRIP CAP & EXTRUDED SILL NOSE, TERRATONE COLOR.
W07	3	24"X22"AW	24X22	AWNING		
W08	1	96"X72"DH	97X73 1/2	DOUBLE HUNG		
W09	1	87"X72"DH	88X73 1/2	DOUBLE HUNG		
W10	1	95"X72"DH	96X73 1/2	DOUBLE HUNG		
W11	11	36"X60"DH	36X60	DOUBLE HUNG		

+1-3 Andersen Basement Utility WINDOW or similar, TO BE INSTALLED ACCORDING TO CONCRETE CONTRACTORS SPECIFICATIONS ONLY. SEE PLAN FOR UT2813

ALL DIMENSIONS, PLANS, SKETCHES, ETC. ARE PROVIDED BASED UPON INFORMATION PROVIDED BY THE CLIENT IN ACCORDANCE TO COMMON BUILDING PRACTICE AND LOCAL CODES.  
MIDCOAST HOME DESIGNS, LLC IS AN EQUAL OPPORTUNITY REGISTERED ARCHITECTURAL FIRM.  
ALL DIMENSIONS AND SPECIFICATIONS WILL BE VERIFIED BY THE CLIENT AND CONTRACTOR BEFORE ACTUAL CONSTRUCTION. F.A.I. IS NOT RESPONSIBLE FOR ANY ERRORS OR OMISSIONS THAT MAY OCCUR. CONTRACTORS SHALL VERIFY ALL DIMENSIONS AND SPECIFICATIONS BEFORE CONSTRUCTION. THESE PLANS ARE ONLY PRELIMINARY AND ARE NOT INTENDED FOR USE FOR CONSTRUCTION.

**MIDCOAST HOME DESIGNS, LLC**  
168 Head Tide Road, Whitefield, ME 04353  
(207) 862-9199 or (207) 308-9779  
Teresa@MidcoastHomeDesigns.com  
www.MidcoastHomeDesigns.com

**PURINTON PROJECT**  
BRUNSVICK, ME

Drawing:  
**FLOOR PLAN**  
Scale:  
1/4"=1'-0"  
Drawn By:  
TERESA SIMPSON

Date:  
8/8/2011  
Revision Dates:  
11/11/2011

Page #  
3 of 4

NOTE: STONE FACADE MATERIAL TO BE DETERMINED BY OWNERS BEFORE INITIAL CONSTRUCTION AND INSTALLATION  
SPEC'S DET. BY MANUFACTURER & CONTRACTOR BEFORE INITIAL CONSTRUCTION