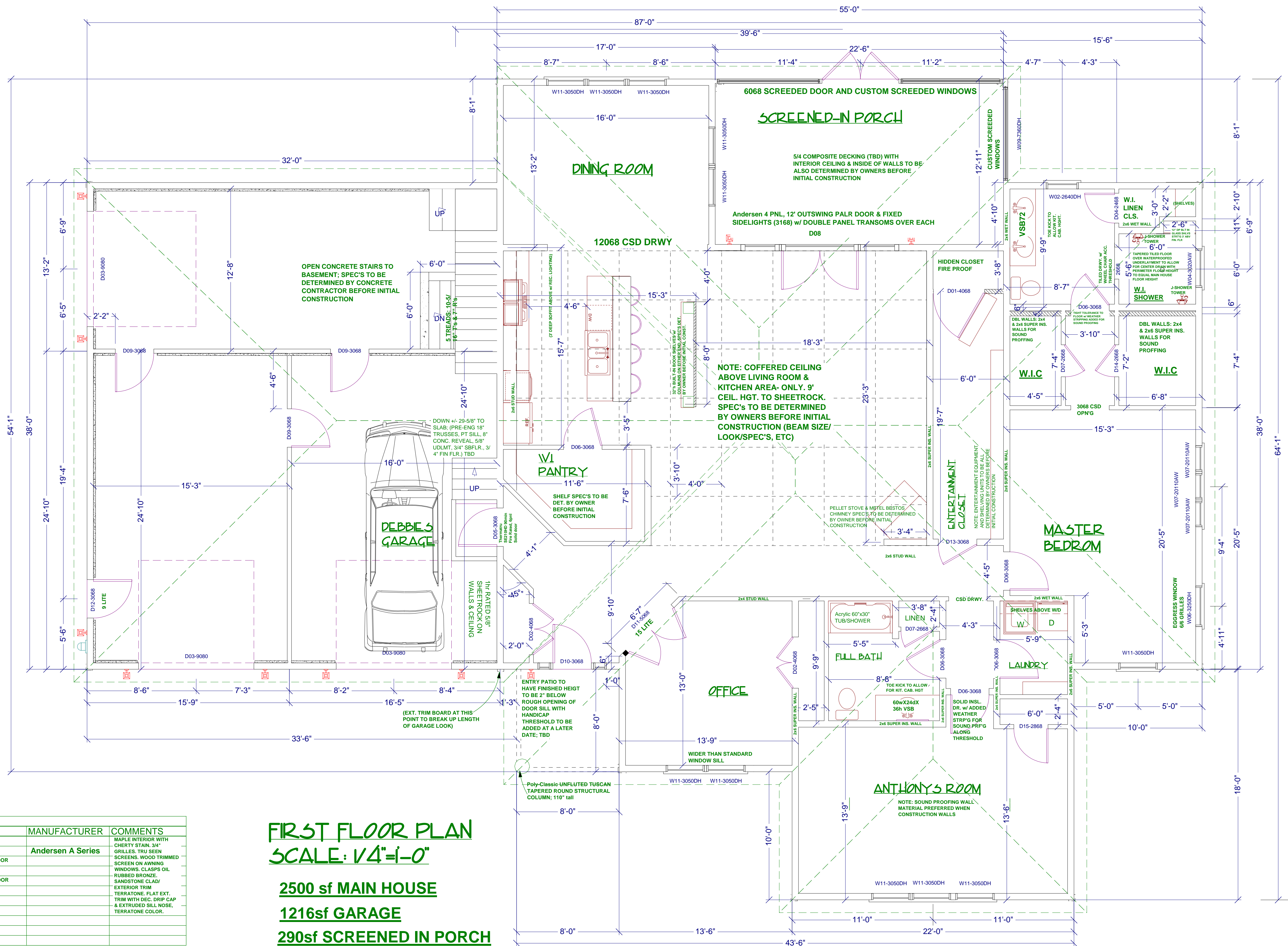


NUMBER	QTY	SIZE	DESCRIPTION	LOCK	EXT. LOCK	MANUFACTURER	COMMENTS
D01	1	4068 L IN	6 PANEL	LOCK: NONE	LOCK: NONE	Simpson or Lemieux	SLAB DOOR w/ SHELVES BUILT ONTO IT FOR HIDDEN CLOSET ACCESS
D02	2	4068 L/R IN	6 PANEL	LOCK: NONE	LOCK: NONE		
D03	3	9080	GARAGE DOORS			Holmes	Gold Series w/ Elegant Raised Panels (m 7200) w/ Colonial 509 windows. Hardware & lift-kit TBD.
D04	1	2468 R IN	6 PANEL	LOCK: NONE	LOCK: NONE		
D05	1	3068 L IN	6 PANEL, 90 minute fire rated	LOCK: STANDARD	LOCK: NONE	Thermatru	
D06	6	3068 R IN	6 PANEL	LOCK: NONE	LOCK: NONE		
D07	2	2668 L IN	6 PANEL	LOCK: NONE	LOCK: NONE		
D08	1	12068 L4 EX	12' OUTSWING PALR DOOR w/ DOUBLE PANEL TRANSOMS OVER EACH	LOCK: DEAD BOLT (INTERIOR)	LOCK: DEAD BOLT (INTERIOR)		Andersen 4 PNL, 12' OUTSWING PALR DOOR & FIXED SIDELIGHTS (3168) w/ DOUBLE PANEL TRANSOMS OVER EACH
D09	3	3068 EX	6 PANEL	LOCK: NONE	LOCK: NONE		
D10	1	3068 L EX	Fiberclastic Mahogany FIM608 Pre-F with FIM6055L sidelights to match	LOCK: DEAD BOLT (INTERIOR)	LOCK: DEAD BOLT (EXTERIOR)		ALL LEVER'S TO BE OIL RUBBED BRONZE FINISH. Exterior doors to be Thermatru to have Ara Lever Handle & straight back plate & hinges to match. Interior doors to be solid High-grade, CLEAR pine with cherry stain and Emtek brand levers & regular rosette back plates (Luzern Lever) Oil Rubbed Bronze with Hinges to match. Casing to be Windsor for doors and windows. Crown & base mouldings TBD.
D11	1	5068 L/R IN	DOUBLE, 15 LITE INTERIOR DOORS	LOCK: NONE	LOCK: NONE		
D12	1	3068 L EX	9 LITE	LOCK: DEAD BOLT (INTERIOR)	LOCK: DEAD BOLT (EXTERIOR)		
D13	1	3068 L IN	6 PANEL	LOCK: NONE	LOCK: NONE	Andersen	
D14	1	2668 R IN	6 PANEL	LOCK: NONE	LOCK: NONE		
D15	1	2868 L IN	6 PANEL	LOCK: NONE	LOCK: NONE	Thermatru	WITH DENTAL SHELF ADDED TO EXTERIOR IF NO storm door will be used
D16	1	6068 L/R EX	SCREENED PORCH DOUBLE HINGED DOORS	LOCK: DEAD BOLT (INTERIOR)	LOCK: DEAD BOLT (EXTERIOR)	unknow	SCREENED PORCH DOUBLE HINGED DOORS

NOTE: ROUGH OPENINGS FOR EXTERIOR DOORS: ADD 2-1/2" TO Width & Height
ROUGH OPENINGS FOR INTERIOR DOORS: ADD 2-1/2" TO Width & Height
THEATER RM & MSTR BATH DOORS TO BE TIGHT-TOLERANCE TO FLOOR w/ WEATHERSTRIPPING FOR SOUND PROOFING



FIRST FLOOR PLAN
SCALE: 1/4"=1'-0"
2500 sf MAIN HOUSE
1216sf GARAGE
290sf SCREENED IN PORCH

NUMBER	QTY	DIMENSIONS	R/O	DESCRIPTION	MANUFACTURER	COMMENTS
W01						
W02	1	30"X48"DH	30X48	DOUBLE HUNG	Andersen A Series	MAPLE INTERIOR WITH CHERRY STAIN, 3/4" GRILLES, TRU SEEN SCREENS, WOOD TRIMMED
W03	2	36"X12"FX	36X12	FWTD-1-3110 TRANS. OVER DOOR		SCREENS ON AWNING WINDOWS, CLASPS OIL RUBBED BRONZE, SANDSTONE GLAZ
W04	1	36"X24"AW	36X24	AWNING		EXTERIOR TRIM TERRATONE FLAT EXT. TRIM WITH DEC. DRIP CAP & EXTRUDED SILL NOSE, TERRATONE COLOR.
W05	1	72"X12"FX	72X12	FWTD-1-6010 TRANS. OVER DOOR		
W06	1	38"X60"DH	38X60	DOUBLE HUNG		
W07	3	24"X22"AW	24X22	AWNING		
W08	1	96"X72"DH	97X73 1/2	DOUBLE HUNG		
W09	1	87"X72"DH	88X73 1/2	DOUBLE HUNG		
W10	1	95"X72"DH	96X73 1/2	DOUBLE HUNG		
W11	11	36"X60"DH	36X60	DOUBLE HUNG		

#1-3 Andersen Basement Utility WINDOW or similar, TO BE INSTALLED ACCORDING TO CONCRETE CONTRACTORS SPECIFICATIONS ONLY. SEE PLAN FOR UT2813

NOTE: STONE FACADE MATERIAL TO BE DETERMINED BY OWNERS BEFORE INITIAL CONSTRUCTION AND INSTALLATION SPEC'S DET. BY MANUFACTURER & CONTRACTOR BEFORE INITIAL CONSTRUCTION

Midcoast Home Designs, LLC
168 Head Tide Road, Whitefield, ME 04353
(207) 862-9199 or (207) 360-9779
Teresa@MidcoastHomeDesigns.com
www.MidcoastHomeDesigns.com

PURINTON PROJECT
BRUNSVICK, ME

Drawing:
FLOOR PLAN
Scale:
1/4"=1'-0"
Drawn By:
TERESA SIMPSON

Date:
8/8/2011
Revision Dates:
11/16/2011

Page #
3 of 4

ALL DIMENSIONS, PLANS, SKETCHES, ETC. ARE PROVIDED BASED UPON INFORMATION PROVIDED BY THE CLIENT IN ACCORDANCE TO COMMON BUILDING PRACTICE AND LOCAL CODES. THE ARCHITECT ASSUMES NO LIABILITY FOR ANY ERRORS OR OMISSIONS AND SPECIFICATIONS WILL BE VERIFIED BY THE CLIENT AND CONTRACTOR BEFORE ACTUAL CONSTRUCTION. P.L.L.C. IS NOT A REGISTERED PROFESSIONAL ENGINEER OR ARCHITECT. REGISTERED ARCHITECTS, ENGINEERS OR LAND SURVEYORS. MIDCOAST HOME DESIGNS AND ITS EMPLOYEES ASSUME NO LIABILITY FOR ANY ERRORS OR OMISSIONS IN THE DESIGN OR CONSTRUCTION OF THIS PROJECT. THESE PLANS ARE ONLY PRELIMINARY AND ARE NOT INTENDED FOR USE FOR CONSTRUCTION.